

DIMD

PP10 STEREO



DIMD PP10 STEREO TECHNICAL DATA SHEET

SPECIFICATIONS

Operating class:	AB
Output topology:	Push-Pull
Output tubes:	EL84
Driver tubes:	ECC83
Nominal speaker impedance:	6 or 8 Ohm
Maximum power:	2 x 10 W
Inputs:	4 RCA pairs
Input sensitivity:	420 mV
THD @ 1W (1kHz):	< 0.1 %
THD @ 10W (1kHz):	< 0.3 %

Frequency response (+0/-0.5 dB):	20 – 20 000 Hz
Power bandwidth (+0/-3.0 dB):	10 – 40 000 Hz
Dynamic range:	90 dB
Stereo crosstalk @ 1W:	-65 dB
Output impedance @ 1W:	2.8 Ohm
Global NFB:	6 dB
Mains voltage:	230 VAC / 50 Hz
Power consumption:	100 W
Dimensions:	430 x 159 x 280 mm
Weight:	9 kg

TOTAL HARMONIC DISTORTION

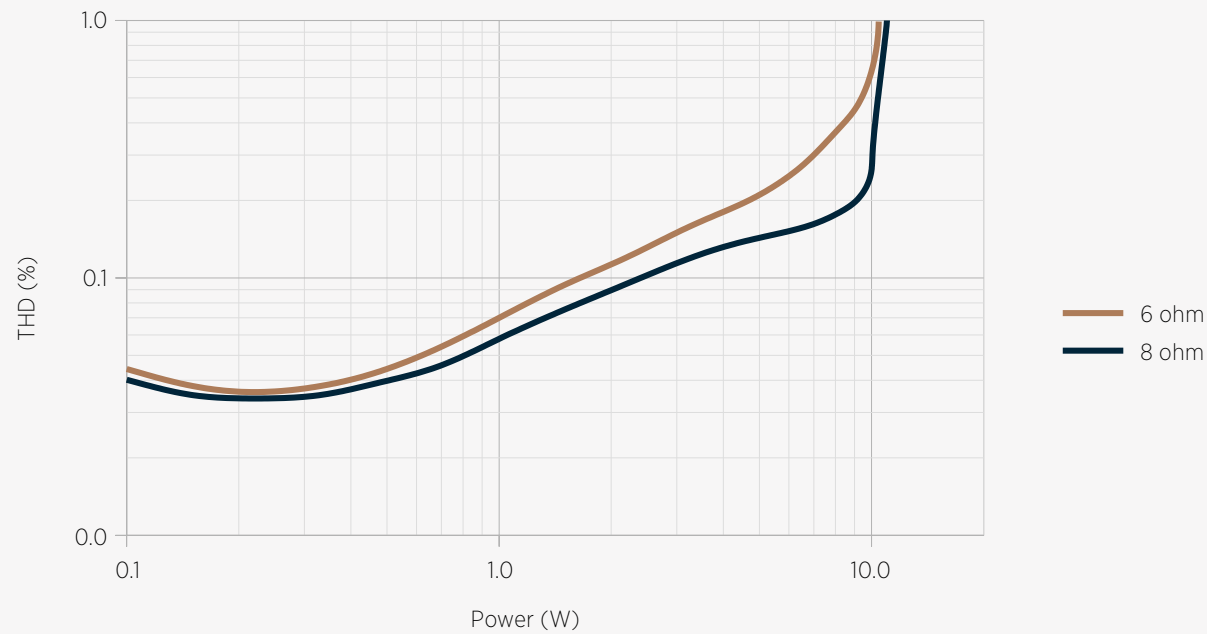


Figure 1.
Total harmonic distortion vs 1kHz
output power into 6 and 8 ohms.

FREQUENCY RESPONSE

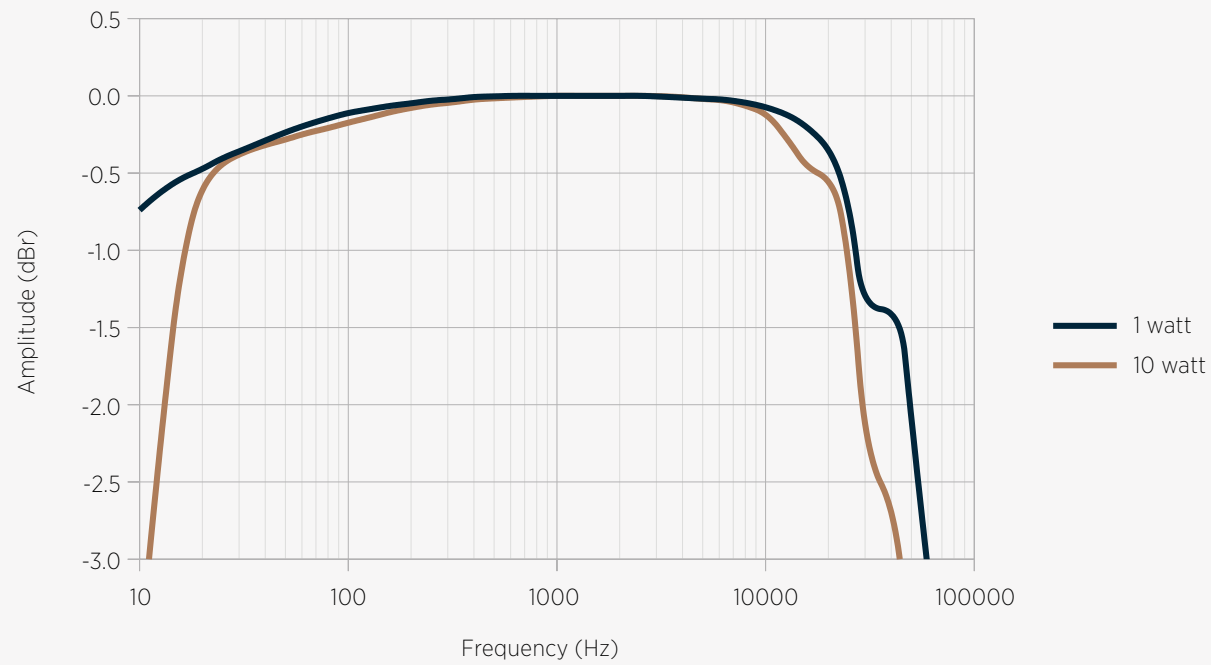


Figure 2.

Frequency response at 1 W and 10 W power. Response is virtually identical both for 6 and 8 ohm loads

SQUARE WAVE

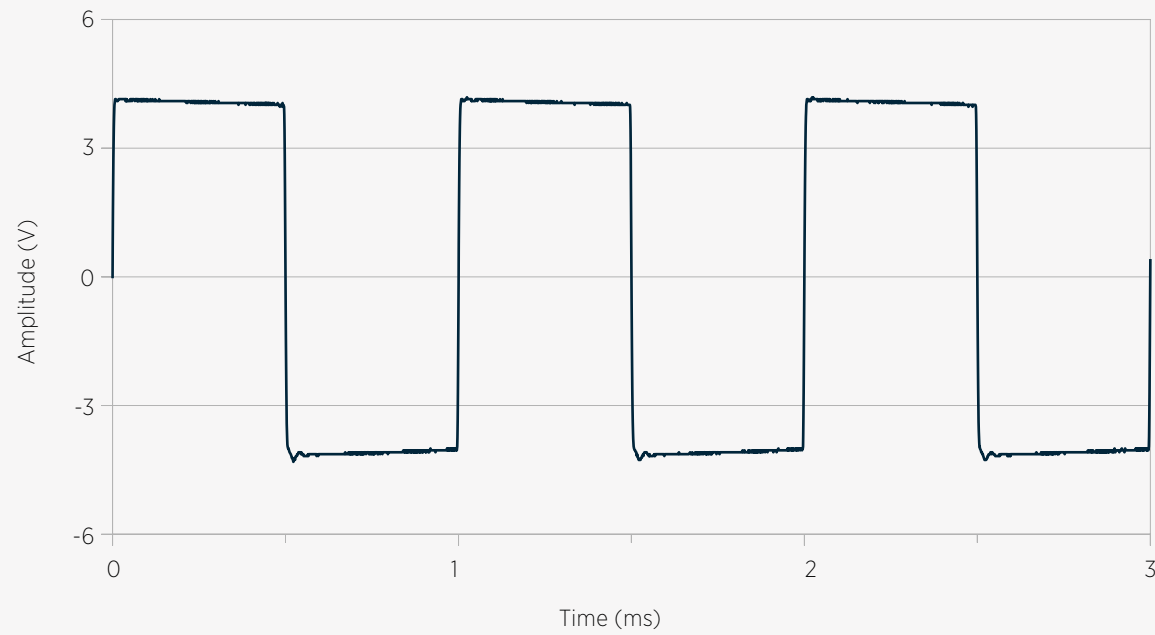


Figure 3.

1kHz square wave into 8 ohms.

INTERMODULATION SPECTRUM

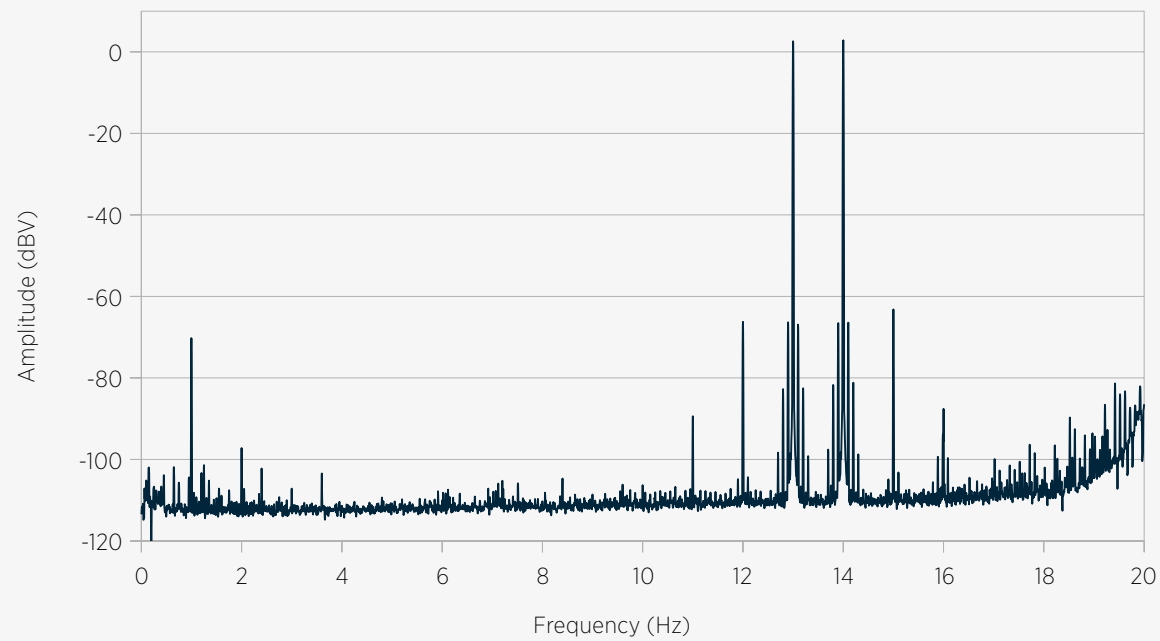
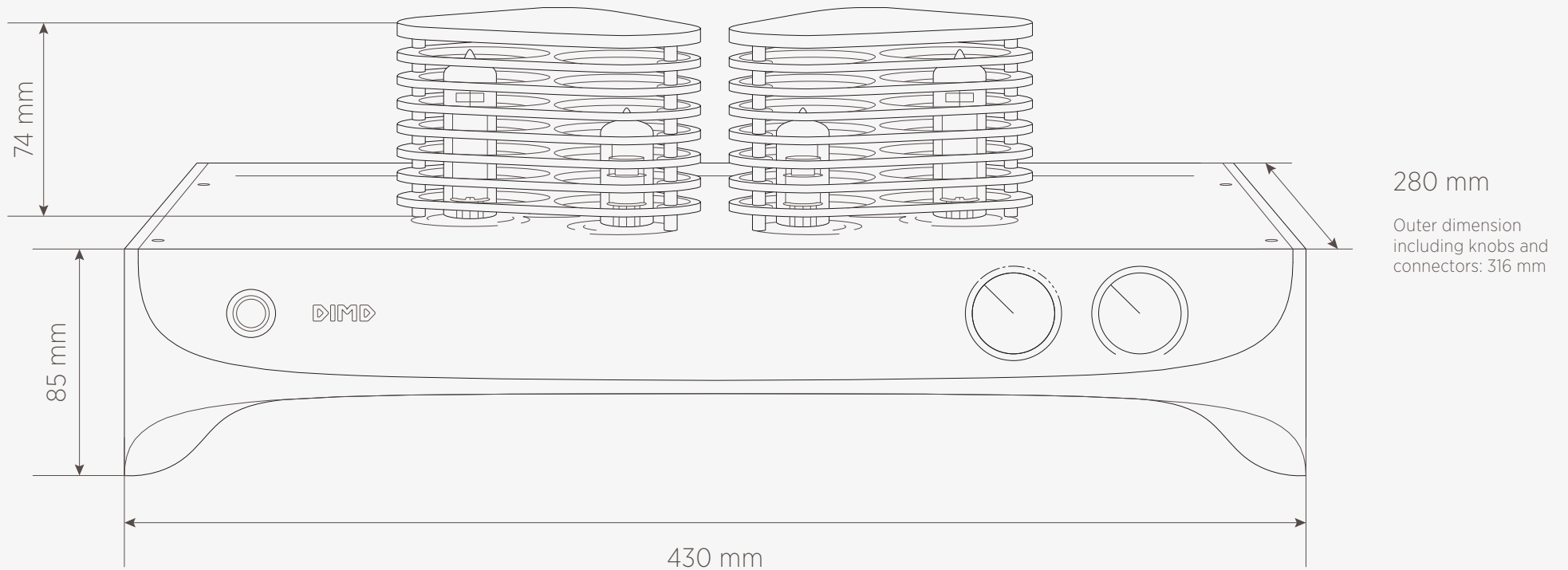


Figure 4.
Intermodulation spectrum, 13+14 kHz
at 1W into 8 ohms. Intermodular
distortion = 0.12%.

DIMENSIONS





16 Bruninieku street,
Riga, LV-1001, Latvia
info@dimd.eu
www.dimd.eu